



GARANT
Diving 

**MARINE RESEARCH &
OFFSHORE ENERGY**

80%
of all the projects
are carried out outside
the Baltic Sea region

250
employees and
specialists

14 850
projects
worldwide

1 570
ships served
annually

8 000
m² warehouse and
workshop facilities

5M
EUR value of various
goods in stock

GARANT GROUP is founded following our passion for sea, love for people and a genuine desire to help.

Service is in our DNA. No matter who we're dealing with, no matter which solution, and no matter which division, we're determined to provide a level of service that will inspire maximum confidence among our customers. We have always been an extraordinary combination of business acumen and rule-makers and rule-breakers.

GARANT DIVING is a part of GARANT GROUP - international group of companies which offers custom solutions for port infrastructure, shipping, oil & gas industry as well as offshore wind farms in the Baltics and Northern Europe.

By operating modern research vessels, we provide high quality oceanographic research with relevant hydrographic and geophysical services to support international offshore wind farms' development projects.

Having a long-term expertise, we are also engaged in complex hydro construction works of the port infrastructure and seabed dredging projects. Experienced divers supported by fully equipped mobile diving stations carry out underwater services at the most convenient location.

Together with our reliable international partners we have established GUSPA - Global Underwater Services Provider's Alliance - in order to assist your vessels around the world.

Exceeding expectations and adding value with an open heart and mind.

Fleet and Equipment

We are dedicated to providing exceptional support for a wide range of marine activities through our specialized fleet of vessels and modern equipment.

Our fleet includes the research vessels MINTIS and BALTIC EXPLORER, alongside mobile diving stations designed for diverse operations at sea and in port.

These versatile vessels play a crucial role in numerous international projects, offering a comprehensive array of services tailored to meet various marine needs.

- ▶ Cable lay
- ▶ Remotely Operated Vehicle (ROV) support and maintenance
- ▶ CPT/ Vibrocore campaigns
- ▶ Cable burial and remedial burial
- ▶ Seismic support
- ▶ Geotechnical activities
- ▶ Backfilling of trenches in shallow waters
- ▶ Implementation of survey activities
- ▶ Assistance during port operations and offshore wind farm construction
- ▶ Dredging activities
- ▶ Anchor handling

Class Approvals



Ship maintenance & commercial diving services

At Garant Diving, we recognize the unique needs of the marine industry. Our team of internationally certified divers adheres strictly to safety standards, ensuring the highest level of protection during all operations.

Our underwater works division, comprised of skilled divers, has extensive experience in hydro construction and is equipped to handle a variety of challenging tasks.

We are actively engaged in the following activities:

- ▶ Vessel class inspection (In-water survey/UWILD)
- ▶ Damage survey
- ▶ Hull cleaning & propeller polishing
- ▶ Hull repair (class approved)
- ▶ Rudder repair
- ▶ Wet welding & cutting
- ▶ Propeller repair & re-balancing
- ▶ Propeller replacement / installation PBCF
- ▶ Azimuth thruster replacement
- ▶ Tail shaft / rudder clearance measurements
- ▶ Search and recovery of lost chains, anchors and steel objects
- ▶ Blanking of sea chest
- ▶ Emergency ships salvage
- ▶ Photo and video reporting
- ▶ Port and dock underwater structures repair & maintenance
- ▶ Underwater cables installation
- ▶ SPM buoy maintenance (oil)
- ▶ LNG terminal maintenance (gas)
- ▶ Stones & wrecks removal works



Baltic Explorer

A compact research vessel designed to carry out complex oceanographic research and to support marine business with high quality hydrographic and geophysical services. The vessel provides an efficient and stable working platform to assist in survey, engineering, salvage, and diving operations.

Equipped with dynamic positioning system (DP1) and advanced integrated communication systems, she is ready to accommodate modern research equipment to provide.

Geological and hydrographic investigations of the sea floor

- ▶ Sea bottom inspection & morphology
- ▶ Soil and water sampling
- ▶ Vibro-coring and CPT testing
- ▶ ROV services

Geophysical investigation

- ▶ Shallow and deep seismics
- ▶ UXO and other buried objects

For your convenient stay onboard the vessel

- ▶ 24h accommodation facilities for 23 PAX (including crew)
- ▶ Comfortable and economical cruise at 12 knots
- ▶ Air-conditioned mess room and accommodation area
- ▶ Comfortable PC lab for surveyors
- ▶ Wi-Fi and Satellite internet facilities



Vessel specifications

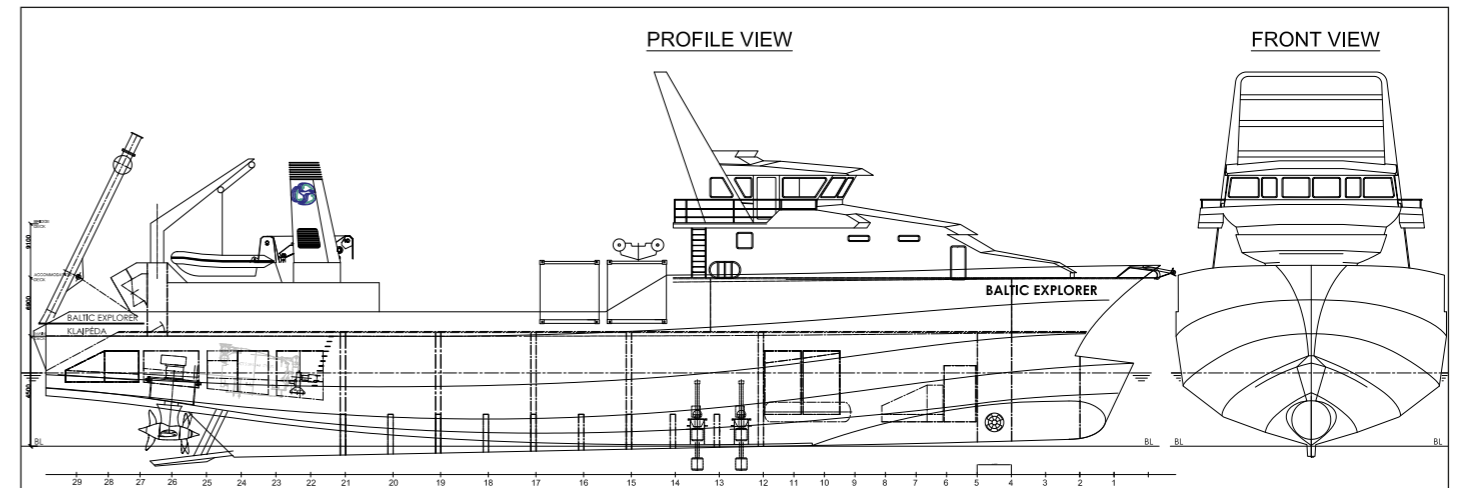
General Characteristics	Building year: 1991 Call sign / IMO: LYBW / 8917663 Classification BV 1 HULL • MACH (Dynapsos AM / AT) Type: Special service / Support vessel Flag: Lithuania MMSI n°: 277199040 DP: 1 VSAT: +441346490607	Power Supply	Generator set: Mitsubishi 2 x 230 KVA S6BMPTA Port generator: 1 -100 KVA 6D16T Electric system: 24 / 220 / 380 V Air compressor: ATLAS COPCO IP: 55, 7,25 KW 10 BAR / Capacity 250 LTR Nu AIR Type: NB7-14 bsa Hydrovane: HV O2 Model 502C 10-201-11bar
--------------------------------	--	---------------------	--

Principal Dimensions	Length O.A: 45,6 m Beam O.A: 11,5 m Draft: 3,1 m Tonnage: GRT 498 / NRT 153 Clear deck area: 300 m ² (total load max 40 t) Length (m) x Breadth (m): 12x11 wooden area, 7x6 metal framed area Load Bearing Capacity: 0.2 t/m ² , (1 t/m ² on the metal frame)	Consumption (depends on the weather)	Max speed cons: 150 L/h Cruising speed cons: 125 L/h Stand by cons: At Sea 50 L/h Stand by cons. In Port 20 L/h DP mode cons: 100 L/h
-----------------------------	--	---	---

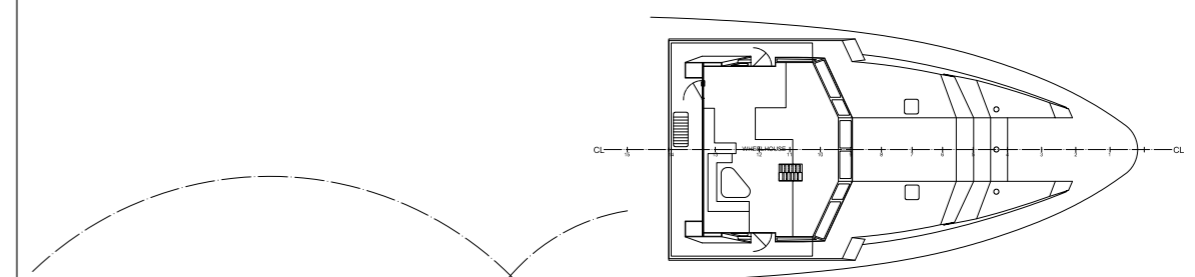
Machinery	Main engine: Mitsubishi V16: 2x 625kW Type S16 R MPTA / Schottel AZIMUT 360° / Twin propellers Type / Schottel STP 550 Maximum speed: 12 knots Cruising speed: 10 knots Main thrusters: Schottel AZIMUT 360° / Twin propellers Type Schottel STP 550 Bow thruster: 1,5 T Thwart. FP thruster (f)	Control, Navigation & Communication Systems	Sounder: Furuno FE700 Set Radar: Furuno FR 2120 X BAND 9 GHZ with ARPA Autopilot: SIMRAD AP70MK2 GPS: MLR Valsat 2008 / MLR FX 312 DGPS: Furuno GP-150D / GP-32 Gyrocompass: ANSCHUTZ STD22 SAT compass: SIMRAD MX575D SART: Jotron Tron Sart 20 / S100 VHF: Furuno FM-8500 / COM-IC M330 AIS: Furuno FA-150
------------------	---	--	--

Deck Machinery	Hydraulic crane FWD: Viscovo 14T/m (800 kg @ 10,5 m) Hydraulic crane AFT: Hydro Armor 40T/m (2300 kg @ 11,8 m) Tugger winch: 10T Moonpool: Yes A-FRAME: Max SWL-12t (10t, 2t, 2t)	Accommodation	POB: 23 Cabins: 1 Single / 6 Double / 2 Triple / 4 passengers in 1 TLQ (for 23 persons)
-----------------------	---	----------------------	--

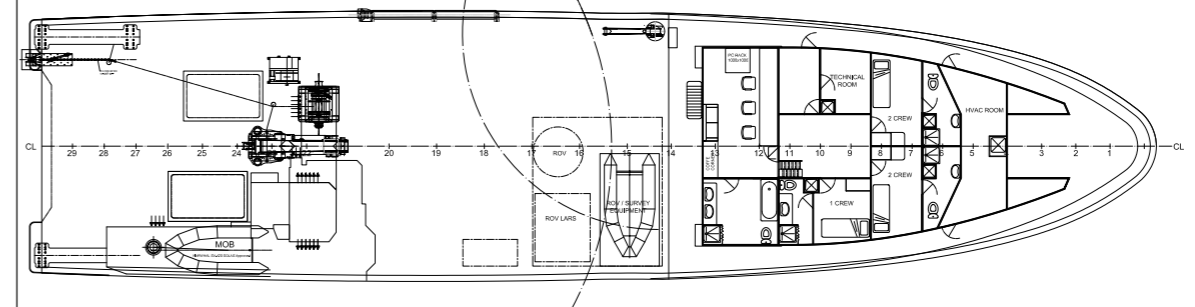
Capacities	Fuel capacity: 56,7 m ³ Fresh water: 4,5 m ³ (0,2 m ³ /h) with AQUA-BASE watermakers YC2-4320-07/12 Sewage tank capacity: 9,4 m ³	Various	Air-conditioning system, SPLIT-Type air conditioners MSZ-SF50VE2 electric heating in each compartment
-------------------	--	----------------	---



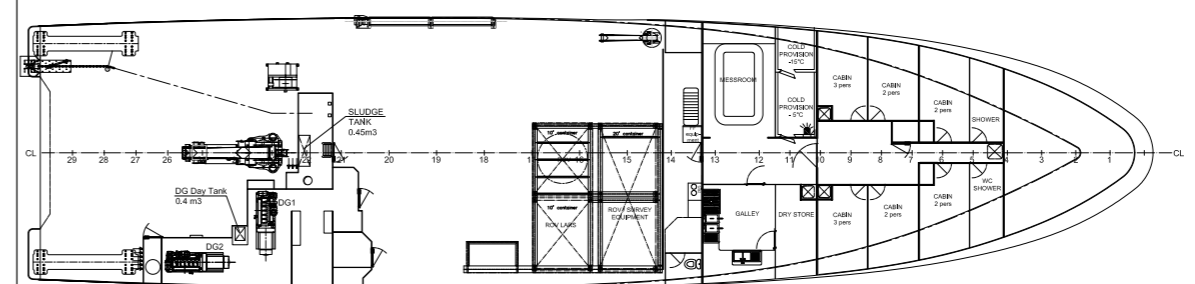
DECK 4 - BRIDGE DECK



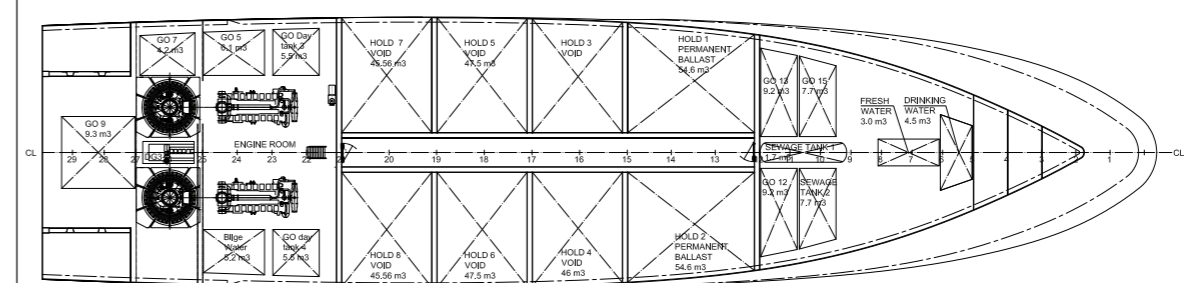
DECK 3 - ACCOMMODATION DECK



DECK 2 - MAIN DECK



DECK 1 - ENGINE ROOM DECK



SHIP'S NAME:	BALTIC EXPLORER
SHIP'S IMO NUMBER:	8917663
FLAG:	LITHUANIA
PORT OF REGISTRY:	KLAIPEDA
SHIP'S CALL SIGNAL:	LYBW
DELIVERY:	1991
CLASSIFICATION:	BV20 1 HULL MACH Support vessel Dynapsos AM / AT
MAIN PARTICULARS:	
LENGTH OVER ALL:	45,6 m
BREADTH MOULDED:	11,10 m
DEPTH MOULDED:	4,50 m
DRAFT SUMMER:	3,13 m
DESIGN SPEED:	14 kn
CREW:	6 pers.
PASSENGERS:	12 pers.

Mintis

A compact catamaran-type vessel for oceanographic research. The vessel is equipped with modern hydrographic, geological, geophysical, biological equipment and integrated with high quality positioning precision advanced communication systems.

Geological and hydrographic investigations

- ▶ Sea bottom inspection & morphology
- ▶ High resolution bathymetry measurements is shallow (up to 40 m) and deep (up to 600 m) waters
- ▶ Marine biodiversity
- ▶ Soil and water sampling
- ▶ Shallow coring

Geophysical investigation

- ▶ Shallow and deep seismics
- ▶ Identification of buried objects

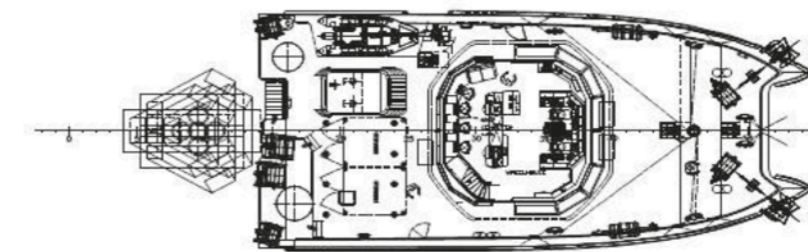
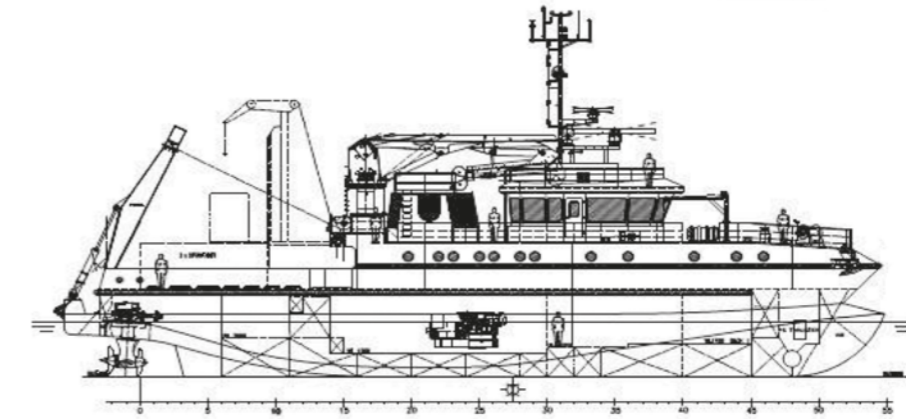
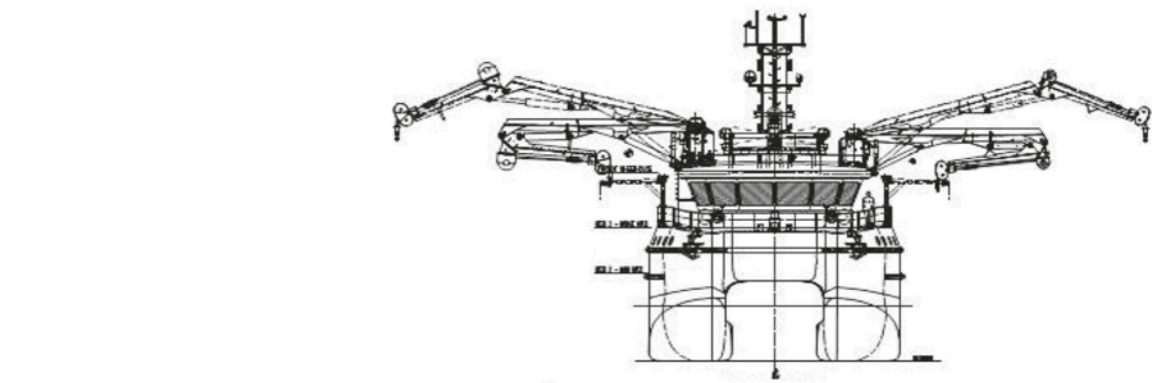
Hydrological investigation

- ▶ Content of suspended matter
- ▶ Current velocity
- ▶ Turbidity
- ▶ Salinity
- ▶ Pressure
- ▶ Conductivity
- ▶ Temperature
- ▶ Oxygen and other

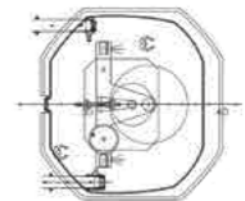


Vessel specifications

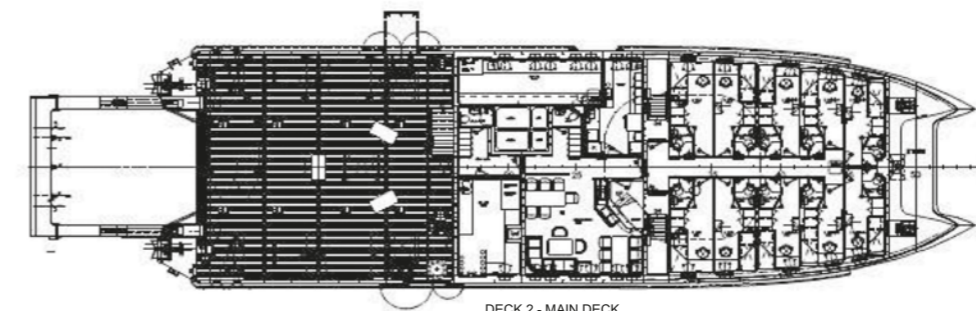
Multibeam	Reson Seabat 7125, Monpool	Tomography	
Echosounder	Mount MRU Octans 3000, Hemisphere RTK GPS	Current profiler	Teledyne WorkHorse ADCP
Sidescan	Klein 3000, Klein 3900, Edge Tech 272TD	ROV	Mariscope Inspection class ROV
Interferometric	Geoswath Compact 500 kHz	CTD	2 x Sea&Sun CTM48M CTD90M with Inductive Curent meter ISM 2001 Teledyne NXIC CTD
Cz	2 x Geometrics G882	Water sampling	Hydrobios PRS with integrante Sea&Sun CTD – 115
Magnetometer USBL	Evologics underwater modems with USBL	Suspension sampling	3 x Multi Sediment Trap MST24
Gradiometer	TVG frame geomatrix G882	Plankton sampling	Set of Apstein plankton nets
Seismics	GeoEel Digital Streamer	Seabed sampling	Hydrobios Van Veen Grabs Vibro core VKG 3 – 3 core up to 6 m Gravity cores up to 3 m
Energy source	SIG Mille Sparker and Boomer up to 1000 J	Software	Hypack 2015 QPS QUINSy, Fledermaus, Quimera
Sub Bottom	Inomar Ses 2000 Light	Workstation	2 x HP Z820, 18 x rs232 ports, 128GB RAM, CPU Intel Xenon E5- 2680 v2, NVIDIA K5000, NVIDIA
Electric	SuperStingTM R8/IP/SP		



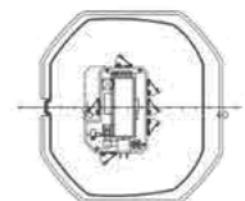
DECK 3 - BRIDGE DECK



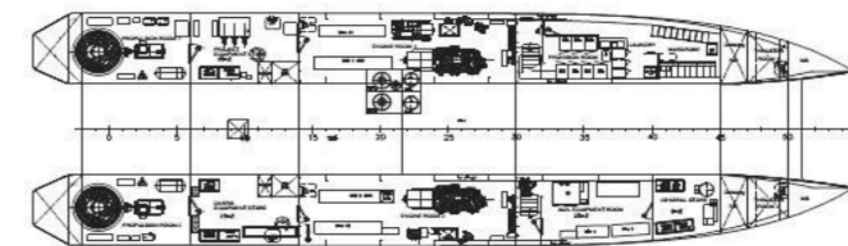
WHELLHOUSE TOP



DECK 2 - MAIN DECK



VENTILATION ROOM



DECK 1 - TANK TOP

SHIP'S NAME:	MINTIS
MAIN DIMENSIONS:	
Length Over All	39.25 m
Breadth	12 m
Draft (max)	3.0 m (Without retracted equip.)
Draft (shallow)	2.8 m
Air Draft	18.2 m
GRT/NRT	499/149
Deadweight	161 ton
Clear Deck Area	120 m ²

DMC Sailor

Survey / Diving Vessel "DMC SAILOR" for various international projects. This vessel is fully certified and ready to support Survey, Engineering, Salvage, Diving or Research projects.

- ▶ 24h accommodation
- ▶ Dimensions of the vessel provides an efficient and stable working platform
- ▶ Comfortably and economically cruise at 13 kts, survey speeds at 1-6 kts Extensively
- ▶ Re-fitted during winter 2008 / 2009
- ▶ Full complement of electronics equipment
- ▶ Cat 2 certification (can easily be upgraded to a Cat 1)



Vessel specifications

General Characteristics Builder : McTay Marine Limited – Wirral
 Launched : Originally launched in 1989, completely re-fitted in 2009
 Flag : St. Kitts & Nevis
 Call sign / IMO : V4JQ6 / 8807961
 Vessel type : Survey / Diving Vessel
 Operating code : MCA SCV Category 2 (60 miles from safe haven).

Principal Dimensions Length (LOA) : 23,57 m
 Beam : 5,9 m
 Draft : 1,8 m
 Tonnage : 106 m³
 Maximum Range : 200 nm

Machinery / Propulsion Maximum Speed : 12-13 knots
 Cruising Speed : 13 knots
 Main engines : 2 x 588 kw, ZF trolling gearboxes
 Generators : 2 x 65 kVa & 1 x 30 kVa

Accommodation Fully equipped galley, mess area, shower room, 2 separate WC, storage space, laundry facilities, 3 double cabins & 3 single cabins, max 9 beds per shift (max POB 12).

Miscellaneous Reverse Osmosis Water Plant

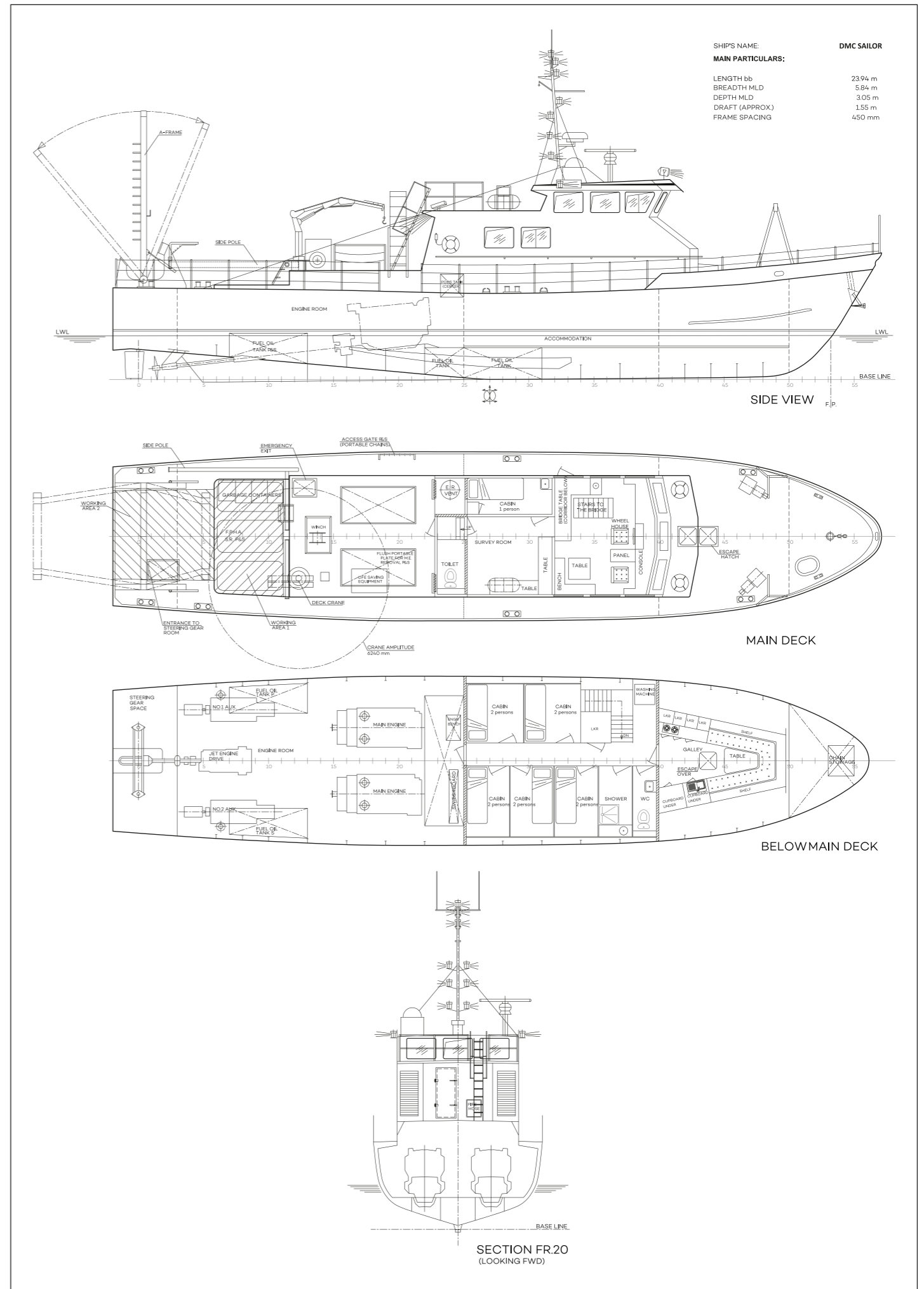
Tank capacities Fuel : 10 m³

Communication, navigation and security systems

- Satellite broadband
- Wireless network
- GSM broadband connectivity
- AIS
- VHF DSC radios
- Navtex
- Weather station
- C-MAP electronic chart plotters
- Dual frequency echo sounder
- Standart autopilot
- Safety equipment complies with the MCA code of practice for Small Commercial Vessels (SCV Code)
- Category 2 certification under the SCV code
- Full complement of immersion suits

Advanced equipment

- Data recording systems, housed in 19" racking units, protected by UPS
- Restricted CCTV monitoring of areas
- On-line survey room with easy access to the working deck
- Multiple monitors at each work station
- 6 m hydraulic A-Frame with a SWL of 1 ton
- Electrical anchor winch, 24 V
- Hydraulic side scan sonar winch
- Hydraulic crane
- Side sensors



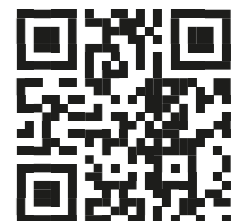
Customers who trust us



Contact us to find out more

+370 614 50149
offshore@garant.eu
v.valancius@garant.eu

Head Office
Dubysos st. 27A
LT-91181 Klaipėda
Lithuania



garant.eu