



BOOM LENGTH 18.3 m
SWL - RADIUS
18.2 MT - 7.0 m
11.5 MT - 10.0 m
9.3 MT - 14.0 m

ALAIPI DA

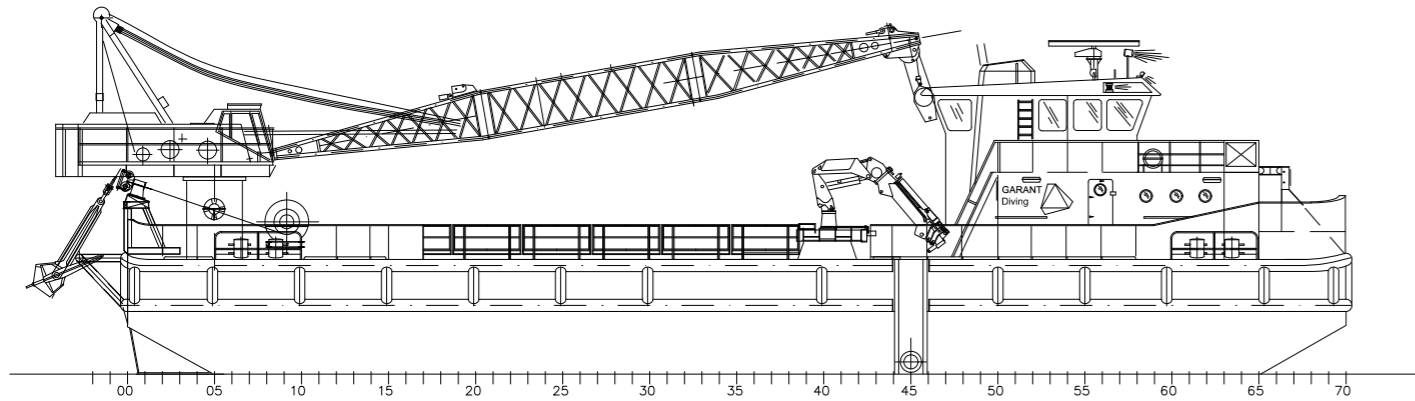
DN 143

GARANT Diving

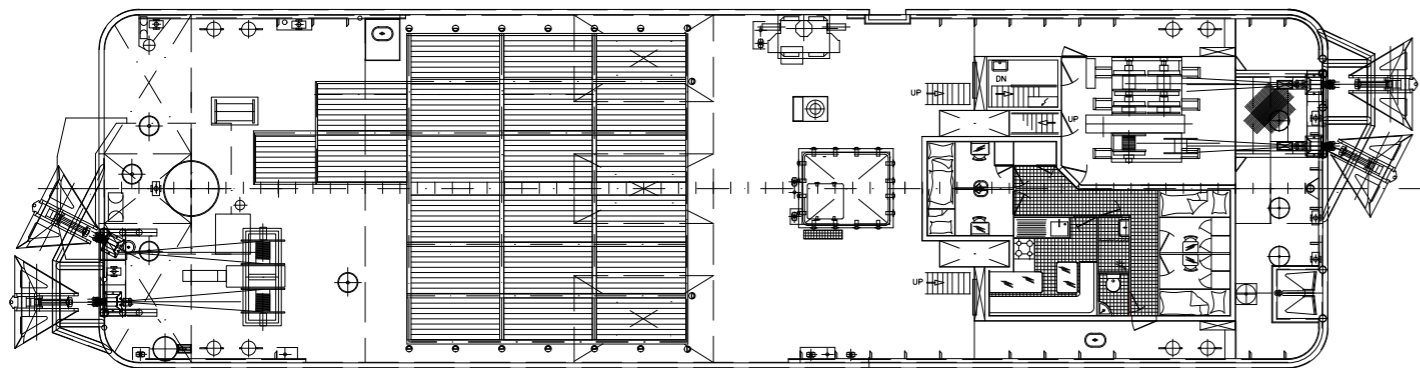
BALTIC WORKER

BEERYP

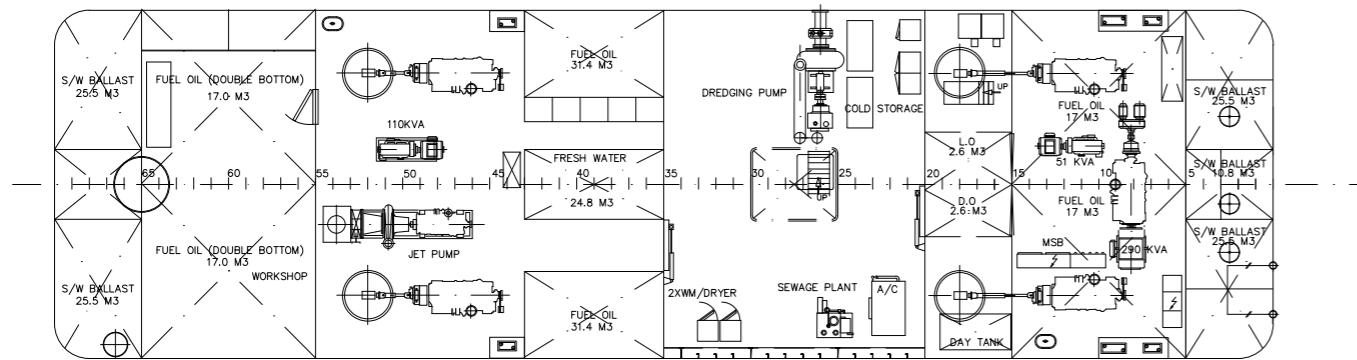
SIDE VIEW



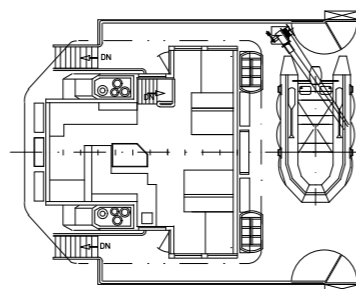
MAIN DECK



BELOW MAIN DECK



BRIDGE DECK



Garant Diving operates Crane-Vessel "Baltic Worker" for various international projects.

This versatile vessel are generally used for:

- ▶ Cable lay
- ▶ Remotely Operated Vehicle (ROV) support and maintenance
- ▶ CPT/ Vibrocore campaigns
- ▶ Cable burial and remedial burial
- ▶ Seismic support
- ▶ Geotechnical activities
- ▶ Backfilling of trenches in shallow waters
- ▶ Implementation of survey activities
- ▶ Assistance during port operations and offshore wind farm construction
- ▶ Dredging activities
- ▶ Anchor handling

Vessel specifications

Classification / Flag	Classification / Flag : Lithuania Trading area : Unrestricted Call sign / IMO : LYAZ / 8829426 Classification society : PRS Class ship type : Multipurpose Offshore Support Vessel Class notation : 100A1 LMC	Tank capacities	Fuel : 135 m ³ Fresh water : 25 m ³
Principal dimensions	Length o.a. : 35,36 m Breadth o.a. : 10,34 m Draft : 1,42 (shallow) - 2,39 (max) m GRT : 359 NRT : 107 Max. deck load : 5 ton/m ² Free deck space : 150 m ²	Accommodation	Fully airconditioned, galley, messroom, sanitary facilities, 2 x single cabins & 2 x double cabins.
Machinery / Propulsion	Maximum speed : 6 knots Bollard pull : 6 ton Power output : 800 kW / 1088 hp Propulsion : 4 x 360 deg. Schottel pumpjets Main engines : Mitsubishi S6N-MPTA 290 kVA Auxiliary engines : 51 kVA 111 kVA / 89 kW	Navigation and communication systems	- AIS EM-Trak A200 Class A - Auto pilot RZ/RHM Seapilot 75 - Echosounder Furuno FCV-581L - Epirb Jotron Tron 40 S - FleetBroadBand 250 JRC JUE-250 - GPS Furuno GP-500 - GPS Furuno GP-90 - GPS Furuno GP-150 - Gyro AD converter Furuno AD100 - Inmarsat-C Sailor H2095C - Inmarsat-C Sailor H2095C - Iridium System Sailor SC4000A/MKIII - Magnetic compass Observer Pilot MK3 - Magnetic compass Cassens & Plath 21 - MF / HF transceiver Furuno FS-1562-15 - Navtex Receiver NSR - Navtex Lokata Navtex 2 - Radar JRC JMA-5310/6 - Sart Jotron Tronsart 20 - Satelite compass Furuno SC-502 - Sonar (2x) Tritech International Limited Super Seaking - VHF Sailor RT2048 - VHF / MF DSC controller Furuno DSC-6A - VHF DSC Furuno FM-8500 - VHF DSC Sailor RT5022 - VHF GMDSS handheld ICOM IC-GM1500E - VHF GMDSS handheld ICOM IC-GM1500E - Wind indicator Obsermet OMC / OMO160
Miscellaneous	4-point mooring : yes Anchor winch aft : 13 ton Anchor winch fore : 5-7 ton Deck crane : 178 tm Dredging pump : 1600 m3/hr Fuel transfer pump Aft: See certificate Fuel transfer pump: See certificate Fore Hydraulic deck crane : 40 tm, 1 ton at 14,3 m Jet pump : 1000 m3/hr		

Contact us to find out more

+370 (614) 50 149

offshore@garant.eu

v.valancius@garant.eu

garant.eu

